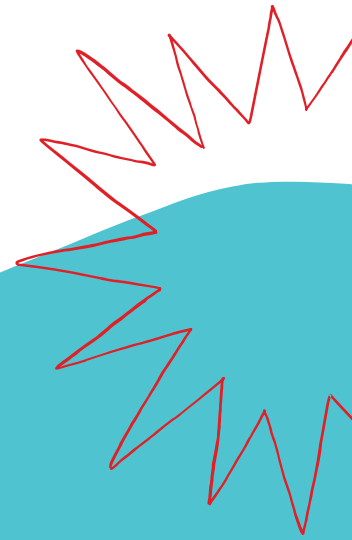




# Thrive by 5

## Affordable Preschool Initiative



### DENIED STATE TUITION ASSISTANCE?

### NEED HELP PAYING FOR PRESCHOOL?

Starting April 2024, Waikiki Community Center Preschool monthly tuition will be \$550/month for qualified families!

#### To qualify, you must:

1. Be a full-time Hawaii resident and work in the state
2. Meet income guidelines

#### Income Guidelines

Household Size	Annual Income Limit
1 Person	\$73,404
2 People	\$83,856
3 People	\$94,356
4 People	\$107,640
5 People	\$126,215
6 People	\$144,780

Interested? Email Ms. Char  
[cmoore@waikikicommunitycenter.org](mailto:cmoore@waikikicommunitycenter.org)